

STANDARD EFFICIENCY CONDENSING UNITS

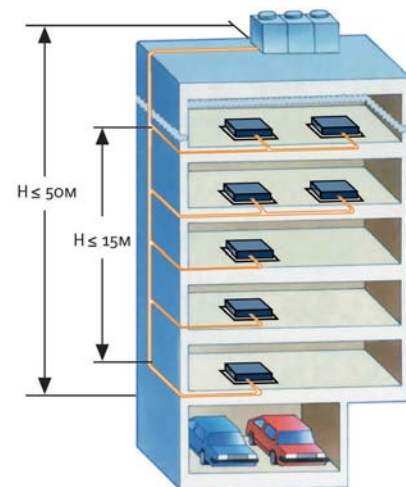
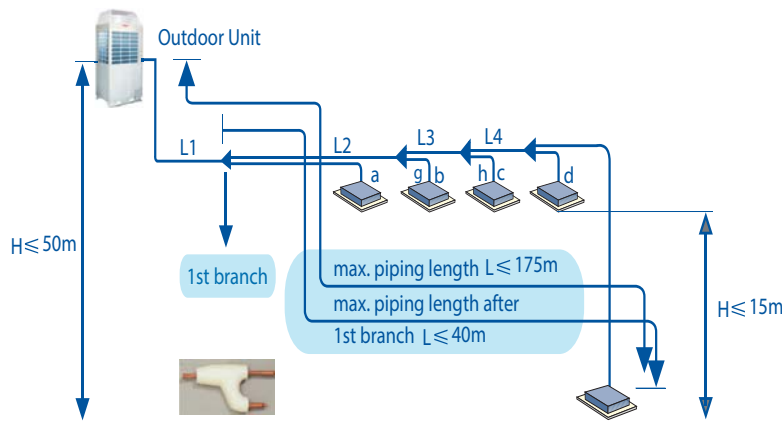


Cooling Capacity 22.8 - 139.0 kW
 Heating Capacity 26.0 - 155.0 kW

- Broad compressor capacity operation range (10% - 100%)
- DC Inverter Scroll Technology
- Cooling to -5°C to $+43^{\circ}\text{C}$ DB (outdoor temperature)
- Heating to -15°C to $+15.5^{\circ}\text{C}$ WB (outdoor temperature)
- High performance - EER up to 4.12
- Green refrigerant R-410A
- Flexible and quick installation
- Smaller footprint
- Versatile indoor units
- Connection of up to 64 indoor units per refrigeration circuit consisting of 3 outdoor units
- Quiet operation

Easy Placement

- Total 300m liquid refrigerant piping length
- Max 175m refrigerant piping length for single pipe
- Max 50m height drop when outdoor unit is above indoor unit
- Max 40m height drop when outdoor unit is below indoor unit
- Max 15m height drop between indoor units under same outdoor unit



Free combination of modular outdoor units

A line up of outdoor units ranging from 8HP to 48HP with 2HP increments which is based on 5 basic 8/10/12/14/16HP modular units, and up to 64 indoor units can be matched into a single combination system.

Capacity	HP	8	10	12	14	16	18	20	22	24	26	28	30	32	34	36	38	40	42	44	46	48
	TR	6.5	8.2	9.9	11.8	13.2	14.7	16.4	18.1	20.0	21.4	23.1	25.0	26.4	28.2	29.6	31.8	33.2	34.6	36.3	38.2	39.6
	Cooling kW	22.8	28.9	34.8	41.5	46.4	51.7	57.8	63.7	70.4	75.3	81.2	87.9	92.8	99.3	104.2	111.9	116.8	121.7	127.6	134.3	139.2
	Heating kW	26.0	32.4	38.7	46.4	51.7	58.4	64.8	71.1	78.8	84.1	92.8	98.1	103.4	111.2	116.5	125.2	130.5	135.8	142.1	149.8	155.1
Maximum Indoor Units	13	16	19	23	26	29	33	36	39	43	46	50	53	56	59	63	64	64	64	64	64	64
Appearance																						

SPECIFICATION

Model Name			YV2VYH022KAS-D-X	YV2VYH028KAS-D-X	YV2VYH033KAS-D-X	YV2VYH040KAS-D-X	YV2VYH045KAS-D-X
Power Supply	Ph-V-Hz		3Ph/380~400V/ 50-60Hz	3Ph/380~400V/ 50-60Hz	3Ph/380~400V/ 50-60Hz	3Ph/380~400V/ 50-60Hz	3Ph/380~400V/ 50-60Hz
Nominal Capacity							
Cooling	Capacity	kW	22.8	28.9	34.8	41.5	46.4
	Input	kW	5.5	7.3	9.8	11.2	13.3
	EER		4.12	3.97	3.54	3.70	3.49
	IEER	Btu/W-h	19.77	18.91	19.98	19.37	18.79
Heating	Capacity	kW	26.0	32.4	38.7	46.4	51.7
	Input	kW	6.0	7.9	10.5	11.8	13.3
	COP		4.31	4.12	3.71	3.95	3.87
Electrical Parameter							
Max. Input Consumption	kW		12.37	14.7	17.54	18.55	20.48
Max. Current	A		19.85	23.4	27.9	29.5	32.37
Performance							
Outdoor Air Flow	m		11100	11100	14100	14100	14100
Outdoor Sound Pressure Level	dB(A)		57	57	60	60	60
Piping Liquid Side/ Gas Side	mm		ø9.52/ø19.05	ø9.52/ø22.2	ø12.7/ø25.4	ø12.7/ø25.4	ø12.7/ø28.58
Containerization							
Dimensions	Unit (WxHxD)	mm	990x1808x750	990x1808x751	1390x1808x750	1390x1808x751	1390x1808x752
	Packing (Wx-HxD)	mm	1090x1990x860	1090x1990x861	1490x1990x860	1490x1990x861	1490x1990x862
Net/Gross Weight	kg		240/260	240 / 260	360/380	360/380	368/393
Qty per 20'/40'/40'HQ	Pieces		9/20/20	9/20/20	7/14/14	7/14/14	7/14/14

Rating Conditions(AHRI1230):

	Outdoor Temperature	Indoor Temperature
Cooling:	35°DB/23.9°WB	26.7°DB/19.4°WB
Heating:	8.3°DB/6.1°WB	21.1°DB /15.6°WB